

TM 11-6625-480-20P

**TECHNICAL MANUAL**

**ORGANIZATIONAL MAINTENANCE REPAIR PARTS  
AND SPECIAL TOOLS LISTS  
FOR**

**TEST SET, INDICATOR AN/ASM-111  
(NSN 6625-00-863-3400)**

**AND**

**SIMULATOR, GYROSCOPE, SIGNAL  
SM-253/ASM (NSN 6625-00-860-9290)**

---

**HEADQUARTERS, DEPARTMENT OF THE ARMY**

**APRIL 1978**

TECHNICAL MANUAL }  
 No. 11-6625-480-20P

**HEADQUARTERS  
 DEPARTMENT OF THE ARMY  
 WASHINGTON, DC, 53 April 1978**

**ORGANIZATION'S MAINTENANCE REPAIR PARTS  
 AND SPECIAL TOOLS LISTS**

**FOR**

**TEST SET, INDICATOR AN/ASM-111  
 (NSN 6625-00-863-3400)**

**AND**

**SIMULATOR, GYROSCOPE, SIGNAL SM-253-ASM  
 (NSN 6625-00-866-9290)**

**Current as of 5 December 1977**

**REPORTING OF ERRORS**  
 You can improve this manual by recommending improvements using DA Form 2028-2 (Test) located in the back of the manual. Simply tear out the self addressed form, fill it out as shown on the sample, fold it where shown, and drop it in the mail.  
 If there are no blank DA Form 2028-2 (Test) in the back of your manual, use the standard DA Form 2028 (Recommended Changes to Publications and Blank Forms) and forward to the Commander, US Army Communications and Electronics Readiness Command, ATTN: DRSEL-MA-Q, Fort Monmouth, NJ 07703.  
 In either case a reply will be furnished direct to you.

Table of Contents

SECTION		Page	Illus Figure
	I. Introduction .....	1	
	II. Repair parts list .....	5	
Group	00 Test Set, Indicator AN/ASM-111 .....	5	1
	0 1 Test Set TS-1626/ASM-111 .....	7	2
	0101 Cable Assembly, special Purpose CX-8510/ASM-111 (No parts authorized)		
	0102 Cable Assembly, Special Purpose CX-8511/ASM-111 (No parts authorized)		
	02 Simulator Signal SM-253/ASM .....	13	5
SECTION	III. Special tools list (Not applicable)		
	IV. National stock number and part number index .....	14	

\*This manual supersedes TM 11-6625-480-20P, 21 May 1969

SECTION I  
INTRODUCTION

1. Scope

This manual lists spares and repair parts; special tools; special test, measurement, and diagnostic equipment (TMDE), and other special support equipment required for performance of organizational maintenance of the AN/ASM-111 and SM-253/ASM. It authorizes the requisitioning and issue of spares and repair parts as indicated by the source and maintenance codes.

2. General

This Repair Parts and Special Tools List is divided into the following sections:

*a. Section II. Repair Parts List.* A list of spares and repair parts authorized for use in the performance of maintenance. The list also includes parts which must be removed for replacement of the authorized parts. Parts lists are composed of functional groups in numeric sequence, with the parts in each group listed in figure and item number sequence.

*b. Section III. Special Tools List.* Not applicable.

*c. Section IV. National Stock Number and Part Number Index.* A list, in National item identification number (NIIN) sequence, of all National stock numbers (NSN) appearing in the listings, followed by a list, in alphameric sequence, of all part numbers appearing in the listings. National stock numbers and part numbers are cross-referenced to each illustration figure and item number appearance.

3. Explanation of Columns

*a. Illustration.* This column is divided as follows:

(1) *Figure number.* Indicates the figure number of the illustration on which the item is shown.

(2) *Item number.* The number used to identify item called out in the illustration.

*b. Source, Maintenance, and Recoverability (SMR) Codes.*

(1) *Source code.* Source codes indicate the manner of acquiring support items for maintenance, repair, or overhaul of end items. Source codes are entered in the first and second positions of the Uniform SMR Code format as follows:

<i>Code</i>	<i>Definition</i>
PA	Item procured and stocked for anticipated or known usage.
XD	A support item that is not stocked. When required, item will be procured through normal supply channels.

**NOTE**

Cannibalization or salvage may be used as a source of supply for any items source coded above except those coded XA and aircraft support items as restricted by AR 700-42.

(2) *Maintenance code.* Maintenance codes are assigned to indicate the levels of maintenance authorized to USE and REPAIR support items. The maintenance codes are entered in the third and fourth positions of the Uniform SMR Code format as follows:

(a) The maintenance code entered in the third position will indicate the lowest maintenance level authorized to remove, replace, and use the support item. The maintenance code entered in the third position will indicate one of the following levels of maintenance:

<i>Code</i>	<i>Application/Explanation</i>
-------------	--------------------------------

O — Support item is removed, replaced, used at the organizational level.

(b) The maintenance code entered in the fourth position indicates whether the item is to be repaired and identifies the lowest maintenance level with the capability to perform complete repair (i.e., all authorized maintenance functions). This position will contain one of the following maintenance codes:

<i>Code</i>	<i>Application / Explanation</i>
H	The lowest maintenance level capable of complete repair of the support item is the general support level.

Z — Nonreparable. No repair is authorized.

(3) *Recoverability code.* Recoverability codes are assigned to support items to indicate the disposition action on unserviceable items. The recoverability code is entered in the fifth position of the Uniform SMR Code format as follows:

<i>Recoverability codes</i>	<i>Definition</i>
Z	Nonreparable item. When unserviceable, condemn and dispose at the level indicated in position 3.
H	Reparable item. When uneconomically reparable, condemn and dispose at the general support level.

*c. National Stock Number.* Indicates the National stock number assigned to the item and will be used for requisitioning purposes.

*d. Part Number.* Indicates the primary number used by the manufacturer (individual, company, firm, corporation, or Government activity), which controls the design and characteristics of the item by means of its engineering drawings, specifications, standards, and inspection requirements to identify an item or range of items.

### NOTE

When a stock numbered item is requisitioned, the repair part received may have a different part number than the part being replaced.

*e. Federal Supply Code for Manufacturer (FSCM).* The FSCM is a 5-digit numeric code listed in SB 708-4, which is used to identify the manufacturer, distributor, or Government agency, etc.

*f. Description.* Indicates the Federal item name and, if required, a minimum description to identify the item.

*g. Unit of Measure (U/M).* Indicates the standard of the basic quantity of the listed item as used in performing the actual maintenance function. This measure is expressed by a two-character alphabetical abbreviation (e.g., ea, in, pr, etc.). When the unit of measure differs from the unit of issue, the lowest unit of issue that will satisfy the required units of measure will be requisitioned.

*h. Quantity Incorporated in Unit.* Indicates the quantity of the item used in the breakout shown on the illustration figure, which is prepared for a functional group, subfunctional group, or an assembly.

### 4. Special Information

*a.* Usable on codes are shown in the description column. Uncoded items are applicable to all models. Identification of the usable on codes used in this publication are:

<i>Code</i>	<i>Used on</i>
2FB	AN/ASM-111
4Q4	SM-253/ASM

*b.* The following publication pertains to the AN/ASM-111 and SM-253/ASM and its components:

TM 11-6625-480-12, Test Set, Indicator AN/ASM-111 and Simulator, Gyro SM-253/ASM

*c.* The illustrations in this manual are identical to those published in TM 11-6625-480-40P. Only those parts assigned the third position SMR maintenance code "C" or "O" are listed in the tabular listing; therefore, there may be a break in the item number sequence. Only illustrations containing organizational authorized items appear in this manual.

### 5. How to Locate Repair Parts

*a.* When National stock number or part number is unknown.

(1) *First.* Using the table of contents, determine the functional group within which the item belongs. This is necessary since illustrations are prepared for functional groups and listings are divided into the same groups.

(2) *Second.* Find the illustration covering the functional group to which the item belongs.

(3) *Third.* Identify the item on the illustration and note the illustration figure and item number of the item.

(4) *Fourth.* Using the Repair Parts Listing, find the figure and item number noted on the illustration.

*b.* When National stock number or part number is known.

(1) *First.* Using the Index of National Stock Numbers and Part Numbers, find the pertinent National stock number or part number. This index is in NIIN

sequence followed by a list of part numbers in alphabetic sequence, cross-referenced to the illustration figure number and item number.

(2) *Second.* After finding the figure and item number, locate the figure and item number in the repair parts list.

6. Abbreviations

Note applicable.

(Next printed page is 4.)

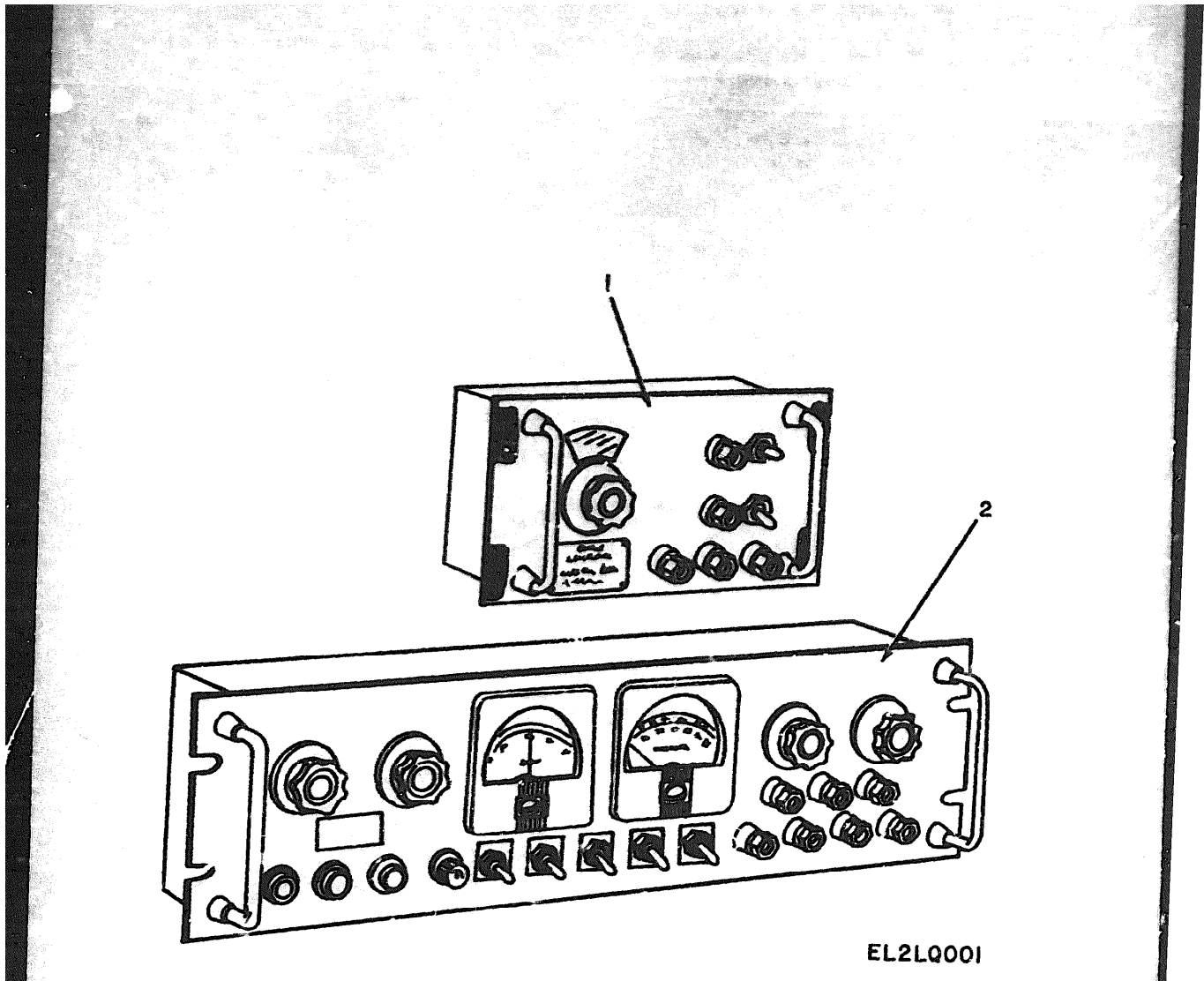


Figure 1. Test Set Indicator AN/ASM-111.

SECTION II

TM 11-6625-480-20P

(1) ILLUSTRATION		(2)	(3)	(4)	(5)	(6) DESCRIPTION	(7) QUANTITY	(8) UNIT
(a) FIG NO.	(b) ITEM NO.	SMR CODE	NATIONAL STOCK NUMBER	PART NUMBER	FSCN	DESCRIPTION	USABLE ON CODE	UNIT
						GROUP 00 TEST SET INDICATOR AN/ASM-111		
1	1	PAGHM	6625-00-860-9290	SM253ASM	84058	SIMULATOR, GYROSCOPE, SIG	2Fc	EA
1	2	PADPH	6625-00-973-3406	TS1626ASR111	88058	TEST SET, INDICATOR	2Fc	EA

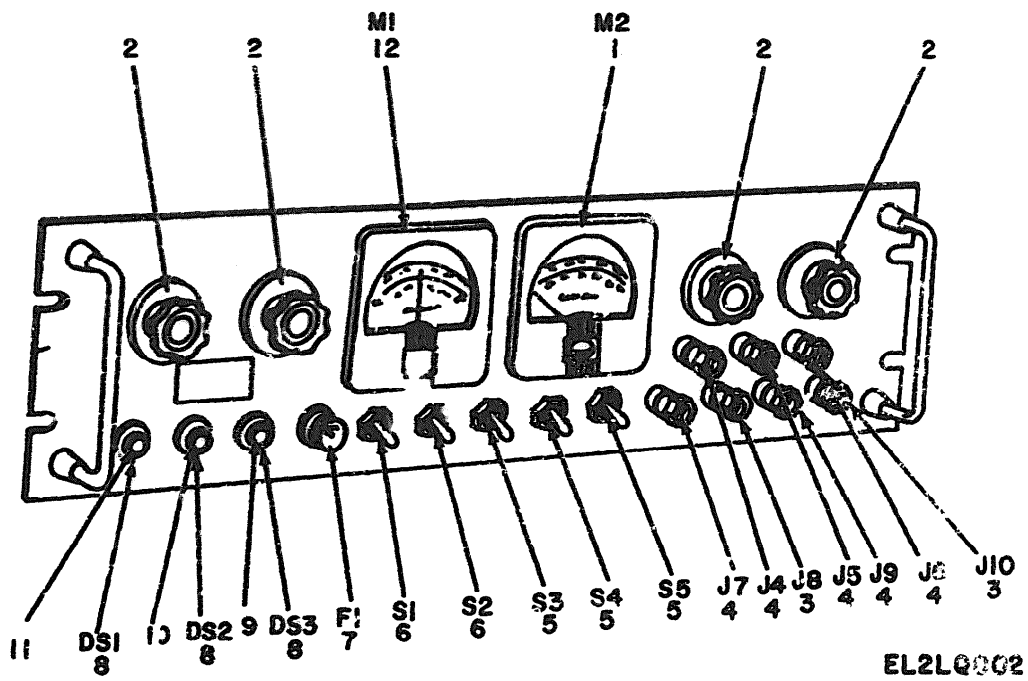


Figure 2. Test Set, Indicator TS-1626/ASM-111. Front View



SECTION II

TM 11-6625-480-20P

ILLUSTRATION		(3)	(4)	(5)	(6)	(7)	(8)	(9)
(1) FIG NO.	(2) ITEM NO.	SMR CODE	NATIONAL STOCK NUMBER	PART NUMBER	FSC#	DESCRIPTION	U.S. SUPPLY CODE	QTY INC IN UNIT
						GROUP 01 TEST SET, INDICATOR TS-1626/ASM-111		
2	2	PAQ22	5355-00-284-5186	281-004-30	95104	WDS	2FB EA	4
2	7	PAQ22	5920-00-280-4465	264-4050-00	95104	FUSE, CARTRIDGE	2FB EA	1
2	8	PAQ23	6245-10-155-8714	262-3270-00	95104	LAMP, INCANDESCENT	2FB EA	3
2	9	PAQ23	6210-00-247-1178	262-0094-00	95104	LENS, INDICATOR LT	2FB EA	1
2	10	XD027		262-0095-00	95104	LENS, INDICATOR LT	2FB EA	1
2	11	XD027		262-0096-00	95104	LENS, INDICATOR LT	2FB EA	1

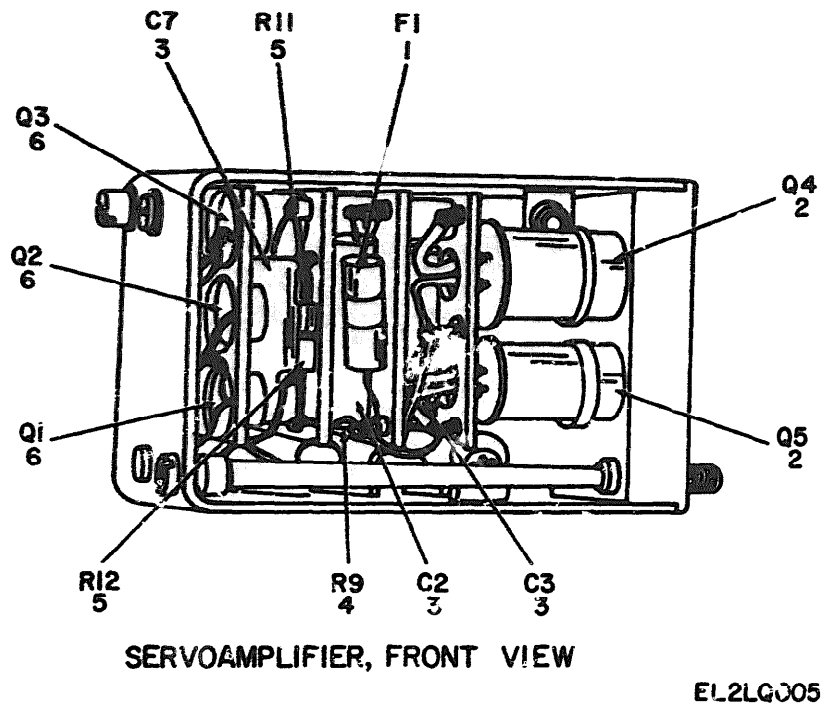


Figure 3. Test Set, Indicator TS-1626/ASM-111, Servoamplifier.

SECTION II

TM 11-6625-480-20P

(1) ILLUSTRATION		(2) QSR CODE	(3) NATIONAL STOCK NUMBER	(4) PART NUMBER	(5) FCM	(6) DESCRIPTION	(7) UTABLE ON CODE	(8) QTY	(9) UNIT
(a) FIG NO.	(b) ITEM NO.								
3	1	PAQZ	5920-00-853-4893	264-0522-00	95104	FUSE, CARTRIDGE	2FE	EA	1

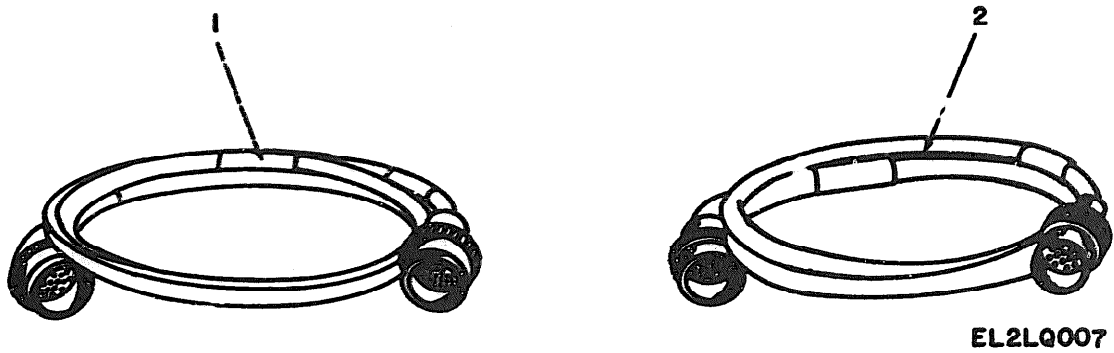


Figure 4. Test Set, Indicator TS-1626/ASM-111, Cable Assemblies.

SECTION II

TM 11-6625-480-20P

(1) ILLUSTRATION		(2)	(3)	(4)	(5)	(6)	(7)	(8)
OR FIG NO.	OR ITEM NO.	SHFT CODE	NATIONAL STOCK NUMBER	PART NUMBER	PCRN	DESCRIPTION	USABLE ON CODE	QTY INC IN UNIT
6	1	PACW4	6625-00-973-3409	CAS11AS111	80038	CABLE ASSEMBLY, SPECIAL	2F8	EA
6	2	PACW4	6625-00-973-1348	CAS10AS111	80038	CABLE ASSEMBLY, SPECIAL	2F8	EA

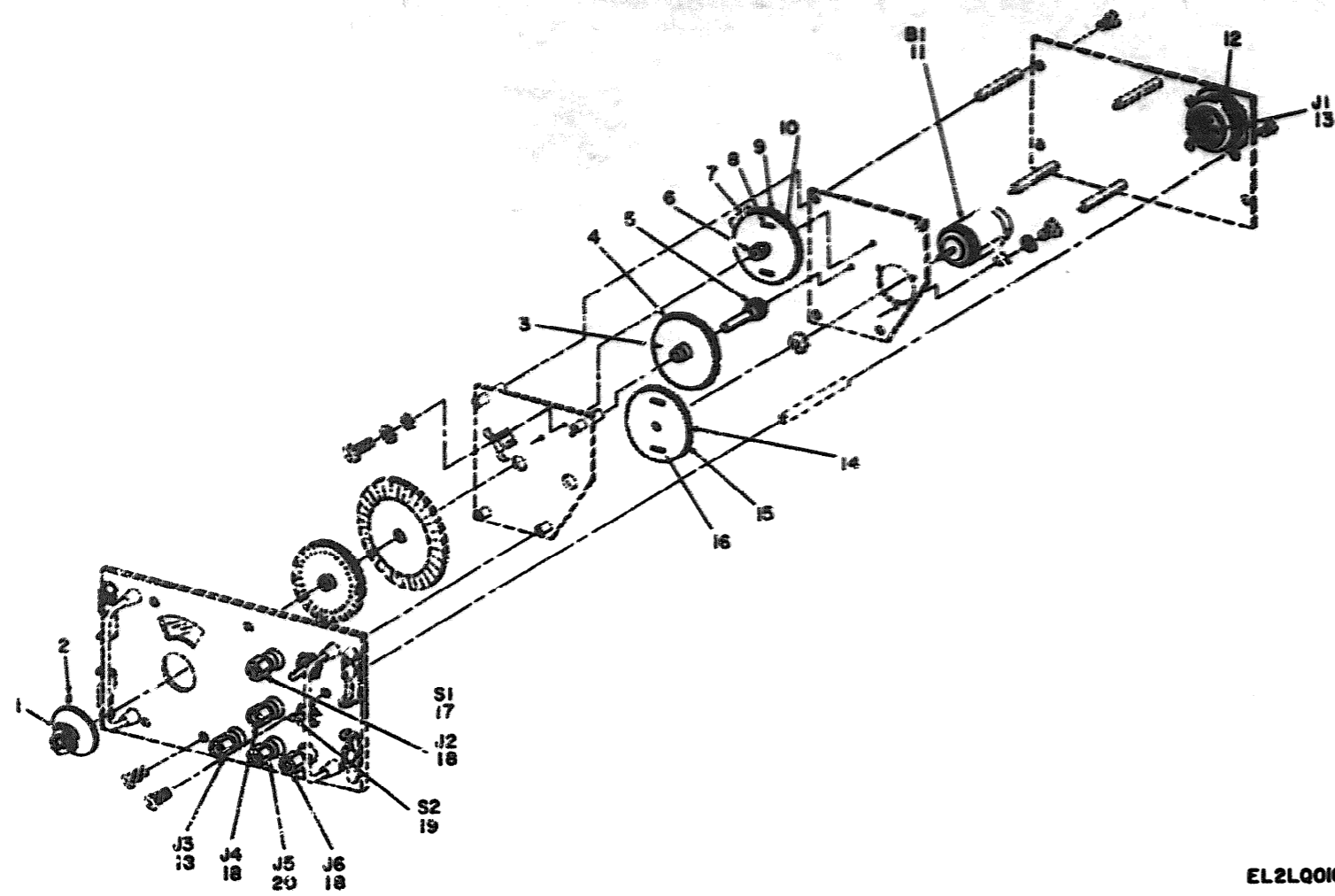


Figure 5. Simulator, Gyroscope, Signal SM-253/ASW.

EL2LQ010

SECTION II

TM 11-6625-480-20P

(1) ILLUSTRATION		(2) SNR CODE	(3) NATIONAL STOCK NUMBER	(4) PART NUMBER	(5) PCRN	(6) DESCRIPTION	(7) USABLE QM CODE	(8) QTY	(9) UNIT
(a) FIG NO.	(b) ITEM NO.								
5	1	PAGZZ	5355-00-284-5186	201-0004-00	95204	KNSB	4C4	EA	1
5	2	X00ZZ		335-0025-00	95104	SCYSCREW	4C4	EA	2

GROUP 02 SIMULATOR, GYROSCOPE, SIGNAL SM-253/ASM

SECTION IV

NATIONAL STOCK NUMBER AND PART NUMBER INDEX

TM 11-6625-480-20P

**STOCK NUMBER**  
 6240-00-155-8714  
 6210-00-247-1778  
 5920-00-280-4465  
 5355-00-284-5186  
 5355-00-284-5186

**FIGURE NO.**      **ITEM NO.**  
 2                    6  
 2                    9  
 2                    7  
 2                    2  
 5                    1

**STOCK NUMBER**  
 5920-00-853-4893  
 6625-00-860-9290  
 6625-00-973-1348  
 6625-00-973-3408  
 6625-00-973-3409

**FIGURE NO.**      **ITEM NO.**  
 3                    1  
 1                    1  
 4                    2  
 1                    2  
 4                    1

**PART NUMBER**  
 CX0510ASH111  
 CX0511ASH111  
 SX253ASW  
 TS1626ASH111  
 262-0094-00  
 262-0095-00  
 262-0096-00

**FSCN**      **FIG. NO.**      **ITEM NO.**  
 80058      4      2  
 80058      4      1  
 80058      1      1  
 80058      1      2  
 95104      2      9  
 95104      2      10  
 95104      2      11

**PART NUMBER**  
 262-2270-00  
 264-0522-00  
 264-0550-00  
 281-0004-00  
 281-0006-00  
 335-0025-00

**FSCN**      **FIG. NO.**      **ITEM NO.**  
 95104      2      8  
 95104      3      1  
 95104      2      7  
 95104      2      2  
 95104      5      1  
 95104      5      2





# SOMETHING WRONG WITH THIS MANUAL?

THEN... JOT DOWN THE DOPE ABOUT IT ON THIS FORM, TEAR IT OUT, FOLD IT AND DROP IT IN THE MAIL!

FROM: (YOUR UNIT'S COMPLETE ADDRESS)

Commander  
Stateside Army Depot  
ATTN: AMSTA-US  
Stateside, N.J. 07703

DATE 10 July 1975

PUBLICATION NUMBER

TM 11-5840-340-12

DATE

23 Jan 74

TITLE

Radar Set AN/SPS-76

BE EXACT... PIN-POINT WHERE IT IS

PAGE NO.	PARAGRAPH	FIGURE NO.	TABLE NO.
2-25	2-28		
3-10	3-3	3-1	
5-6	5-8		

IN THIS SPACE TELL WHAT IS WRONG AND WHAT SHOULD BE DONE ABOUT IT:

Recommend that the installation antenna alignment procedure be changed through to specify a 2° IFF antenna lag rather than 1°.

REASON: Experience has shown that with only a 1° lag, the antenna servo system is too sensitive to wind gusting in excess of 20 knots, and has a tendency to rapidly accelerate and decelerate as it hunts, causing strain to the drive train. Hunting is minimized by adjusting the lag to 2° without degradation of operation.

Item 5, Function column. Change "2 db" to "3db."

REASON: The adjustment procedure for the TRANS POWER FAULT indicator calls for a 3 db (500 watts) adjustment to light the TRANS POWER FAULT indicator.

Add step f.1 to read, "Replace cover plate removed in step e.1, above."

REASON: To replace the cover plate.

FO3

Zone C 3. On J1-2, change "+24 VDC to "+5 VDC."

REASON: This is the output line of the 5 VDC power supply. + 24 VDC is the input voltage.

TYPED NAME, GRADE OR TITLE, AND TELEPHONE NUMBER

SSG J. M. DeSpirito 999-1776

SIGN HERE:

*SSG J.M. DeSpirito*

DA FORM 2028-2 (TEST) 1 AUG 74

P.S.--IF YOUR OUTFIT WANTS TO KNOW ABOUT YOUR MANUAL "FIND" MAKE A CARBON COPY OF THIS AND GIVE IT TO YOUR HEADQUARTERS.

HISA 1686-75

TEAR ALONG DOTTED LINE



# SOMETHING WRONG WITH THIS MANUAL?

THEN... JOT DOWN THE DOPE. SCUT IT ON THIS FORM, TEAR IT OUT, FOLD IT AND DROP IT IN THE MAIL!

FROM: (YOUR UNIT'S COMPLETE ADDRESS)

DATE

PUBLICATION NUMBER: **TM 11-6625-480-20P**      DATE: **13 Apr 78**      TITLE:

BE EXACT... PIN-POINT WHERE IT IS				IN THIS SPACE TELL WHAT IS WRONG AND WHAT SHOULD BE DONE ABOUT IT:
PAGE NO.	PARA-GRAPH	FIGURE NO.	TABLE NO.	

TEAR ALONG DOTTED LINE

TYPED NAME, GRADE OR TITLE, AND TELEPHONE NUMBER      SIGN HERE:

**DA FORM 2028-2 (TEST)**  
AUG 74

P.S.--IF YOUR OUTFIT WANTS TO KNOW ABOUT YOUR MANUAL "FIND." MAKE A CARBON COPY OF THIS AND GIVE IT TO YOUR HEADQUARTERS.

FILL IN YOUR  
UNIT'S ADDRESS

FOLD BACK

DEPARTMENT OF THE ARMY

OFFICIAL BUSINESS

PENALTY FOR PRIVATE USE, \$300

POSTAGE AND FEES PAID  
DEPARTMENT OF THE ARMY  
DOD-214



Commander  
US Army Communications and  
Electronics Materiel Readiness Command  
ATTN: DRSEL-MA-Q  
Fort Monmouth, New Jersey 07703

TEAR ALONG DOTTED LINE

FOLD BACK

REVERSE OF DA FORM 2025-2 (TEST)

RECOMMENDED CHANGES TO EQUIPMENT TECHNICAL MANUALS



**SOMETHING WRONG WITH THIS MANUAL?**

THEN... JOY DOWN THE DOPE ABOUT IT ON THIS FORM, TEAR IT OUT, FOLD IT AND DROP IT IN THE MAIL!

FROM: (YOUR UNIT'S COMPLETE ADDRESS)

DATE

13 Apr 78

PUBLICATION NUMBER

TM 11-6625-480-20P

DATE

13 Apr 78

TITLE

BE EXACT... PIN-POINT WHERE IT IS				IN THIS SPACE TELL WHAT IS WRONG AND WHAT SHOULD BE DONE ABOUT IT:
PAGE NO.	PARA-GRAPH	FIGURE NO.	TABLE NO.	

TEAR ALONG DOTTED LINE

TYPED NAME, GRADE OR TITLE, AND TELEPHONE NUMBER

SIGN HERE:

DA <sup>FORM</sup> 2028-2 (TEST) 1 AUG 74 P.S.--IF YOUR OUTFIT WANTS TO KNOW ABOUT YOUR MANUAL "FIND," MAKE A CARBON COPY OF THIS AND GIVE IT TO YOUR HEADQUARTERS.

FILL IN YOUR  
UNIT'S ADDRESS

FOLD BACK

DEPARTMENT OF THE ARMY

POSTAGE AND FEES PAID  
DEPARTMENT OF THE ARMY  
DDO-314



OFFICIAL BUSINESS  
PENALTY FOR PRIVATE USE, \$300

Commander  
US Army Communications and  
Electronics Materiel Readiness Command  
ATTN: DRSEL-MA-Q  
Fort Monmouth, New Jersey 07703

TEAR ALONG DOTTED LINE

FOLD BACK

REVERSE OF DA FORM 2026-2 (TEST)

RECOMMENDED CHANGES TO EQUIPMENT TECHNICAL MANUALS



# SOMETHING WRONG WITH THIS MANUAL?

THEN... JOT DOWN THE DOPE ABOUT IT ON THIS FORM, TEAR IT OUT, FOLD IT AND DROP IT IN THE MAIL!

FROM: (YOUR UNIT'S COMPLETE ADDRESS)

DATE

PUBLICATION NUMBER

TM 11-6625-480-20P

DATE

13 Apr 78

TITLE

BE EXACT... PIN-POINT WHERE IT IS

IN THIS SPACE TELL WHAT IS WRONG AND WHAT SHOULD BE DONE ABOUT IT:

PAGE NO.	PARA-GRAPH	FIGURE NO.	TABLE NO.

TEAR ALONG DOTTED LINE

TYPED NAME, GRADE OR TITLE, AND TELEPHONE NUMBER

SIGN HERE:

DA FORM 2028-2 (TEST)  
1 AUG 74

P.S.--IF YOUR OUTFIT WANTS TO KNOW ABOUT YOUR MANUAL "FIND," MAKE A CARBON COPY OF THIS AND GIVE IT TO YOUR HEADQUARTERS.

FILL IN YOUR  
UNIT'S ADDRESS

FOLD BACK

DEPARTMENT OF THE ARMY

POSTAGE AND FEES PAID  
DEPARTMENT OF THE ARMY  
DDO-314



OFFICIAL BUSINESS  
PENALTY FOR PRIVATE USE, \$300

Commander  
US Army Communications and  
Electronics Materiel Readiness Command  
ATTN: DRSEL-MA-Q  
Fort Monmouth, New Jersey 07703

TEAR ALONG DOTTED LINE

FOLD BACK

REVERSE OF DA FORM 2025-1 (TEST)

**BERNARD W. ROGERS**  
*General, United States Army*  
*Chief of Staff*

Official: \_\_\_\_\_

**J. C. PENNINGTON**  
*Brigadier General, United States Army*  
*The Adjutant General*

**DISTRIBUTION:**

To be distributed in accordance with DA Form 12-36A, Section II, Organizational Avionics Literature requirements for AN/ASM-111 and SM-253/ASM-57.

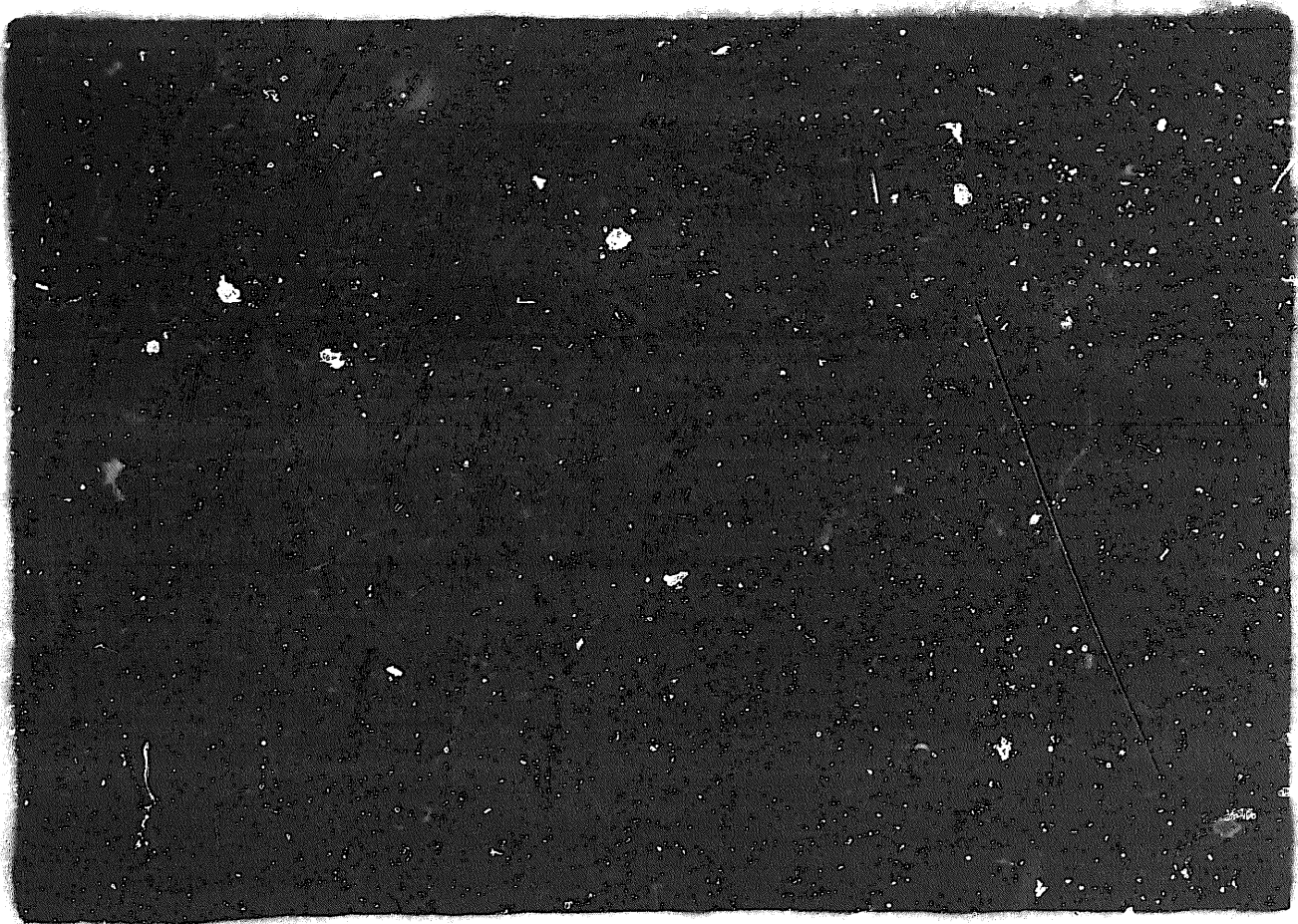


**END**

7-25-83

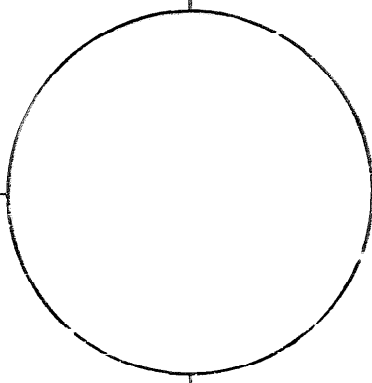
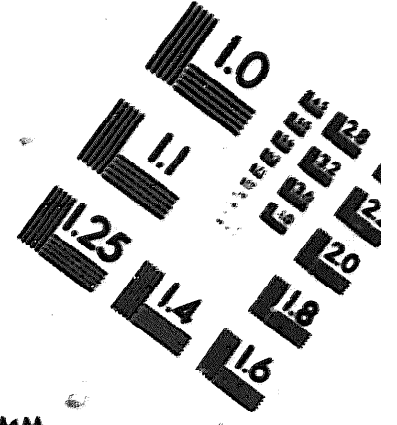
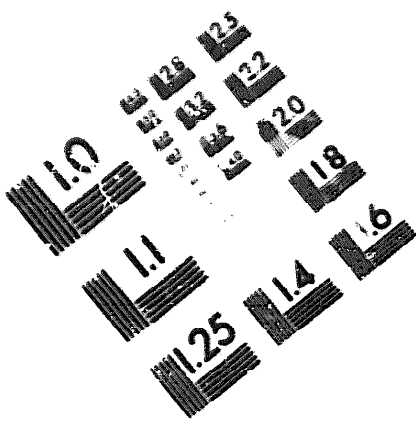
**DATE**





DEPARTMENT OF THE ARMY

MICROFORM  
TEST TARGET



150 MM

1.0 mm (e= 0.7 mm)

ABCDEFGHIJKLMN OPQRSTUVWXYZ 1234567890  
abcdefghijklmnopqrstuvwxyz \$%&' /%# 1/2 1/4 3/4 ---+ x&@\*

1.5 mm (e= 1.09 mm)

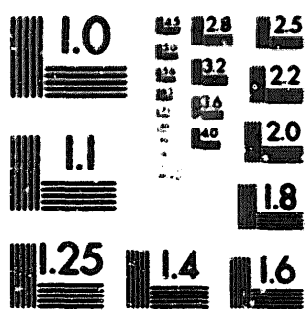
ABCDEFGHIJKLMN OPQRSTUVWXYZ 1234567890  
abcdefghijklmnopqrstuvwxyz \$%&' /%# 1/2 1/4 3/4 ---+ x&@\*

2.0 mm (e= 1.37 mm)

ABCDEFGHIJKLMN OPQRSTUVWXYZ  
abcdefghijklmnopqrstuvwxyz  
1234567890 \$%&' /%# 1/2 1/4 3/4 ---+ x&@\*

2.5 mm (e= 1.77 mm)

ABCDEFGHIJKLMN OPQRSTUVWXYZ  
abcdefghijklmnopqrstuvwxyz  
1234567890 \$%&' /%# 1/2 1/4 3/4 ---+ x&@\*



1.0 mm (e= 0.7 mm)

ABCDEFGHIJKLMN OPQRSTUVWXYZ 1234567890  
abcdefghijklmnopqrstuvwxyz \$%&' /%# 1/2 1/4 3/4 ---+ x&@\*

1.5 mm (e= 1.09 mm)

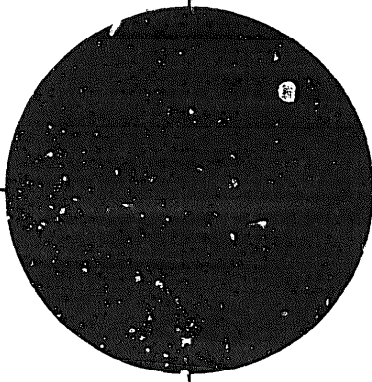
ABCDEFGHIJKLMN OPQRSTUVWXYZ 1234567890  
abcdefghijklmnopqrstuvwxyz \$%&' /%# 1/2 1/4 3/4 ---+ x&@\*

2.0 mm (e= 1.37 mm)

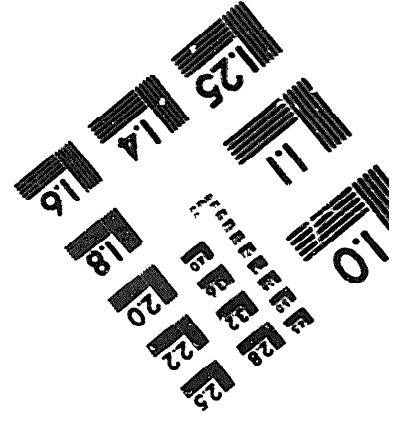
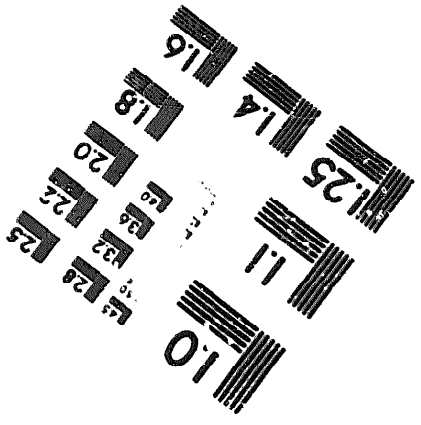
ABCDEFGHIJKLMN OPQRSTUVWXYZ  
abcdefghijklmnopqrstuvwxyz  
1234567890 \$%&' /%# 1/2 1/4 3/4 ---+ x&@\*

2.5 mm (e= 1.77 mm)

ABCDEFGHIJKLMN OPQRSTUVWXYZ  
abcdefghijklmnopqrstuvwxyz  
1234567890 \$%&' /%# 1/2 1/4 3/4 ---+ x&@\*



200 MM



250 MM